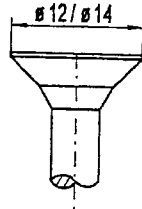
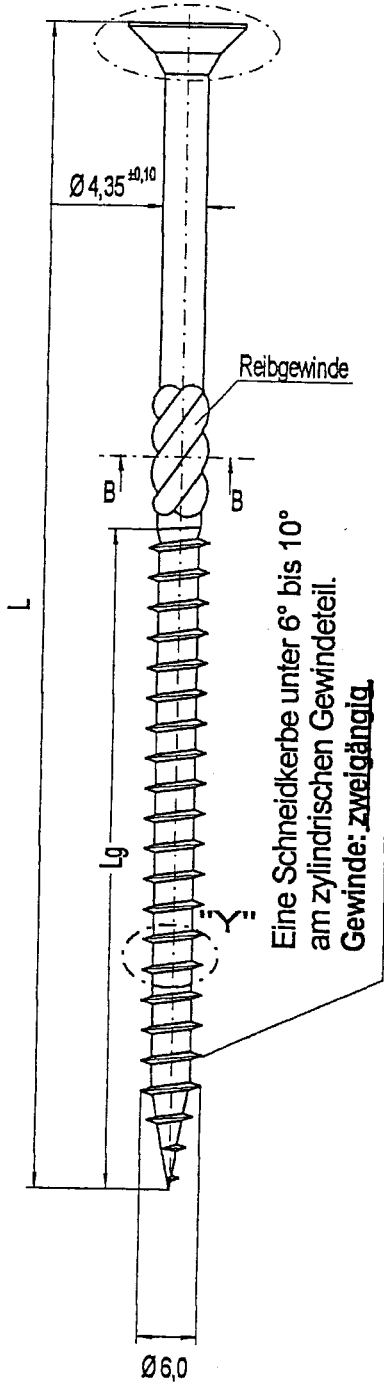
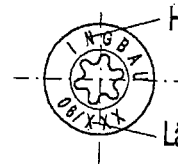


Schraubenkopf
Detail "X"

Schraubenkopf Detail "X"



BiROX Nr.:30

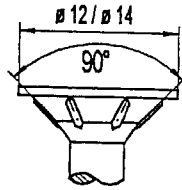


Herstellereichenzeichen

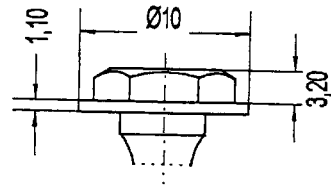
Längeneichenzeichnung Lk

Alternative Kopfformen

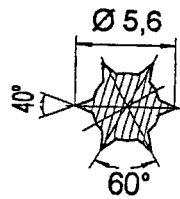
24 alternativ 6 Friktionsrippen
gleichmäßig am Umfang verteilt



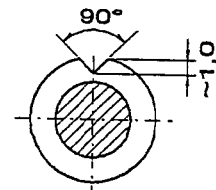
SW 8 + BiROX Nr.:25



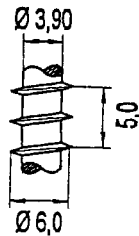
Schnitt B-B



Schneidkerbe



Detail "Y"



| L | Lg | Lk |
|-----|----|--------|
| 60 | 40 | 06/060 |
| 70 | 40 | 06/070 |
| 80 | 40 | 06/080 |
| 90 | 50 | 06/090 |
| 100 | 50 | 06/100 |
| 120 | 80 | 06/120 |
| 130 | 80 | 06/130 |
| 140 | 80 | 06/140 |
| 150 | 80 | 06/150 |
| 160 | 80 | 06/160 |
| 180 | 80 | 06/180 |
| 200 | 80 | 06/200 |
| 220 | 80 | 06/220 |
| 240 | 80 | 06/240 |
| 260 | 80 | 06/260 |

BIERBACH® GmbH & Co. KG
Befestigungstechnik
Rudolf Diesel Strasse

D-59425 Unna

BiRA® IngBau - Schraube Ø 6,0
als Holzverbindungsmittel
Doppelganggewinde

Anlage 1

zur allgemeinen
bauaufsichtlichen Zulassung
Nr. Z-9.1-427
vom 11. Januar 2006

