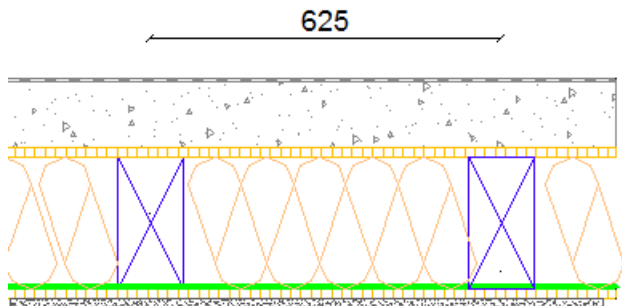


ANNEX A – DESCRIPTION OF COMPONENTS

Elements of external walls

External wall OPTIMA (horizontal section)



Components (from bottom to top)

Nr.	Product	Dimensions [mm]	EN ETA	Reaction to fire
1	Gypsum plasterboard* (paper weight > 220 g/m ² ≤ 320 g/m ²)**	12.5	EN 520	B-s1, d0 (2006/673/EC)
2.1	Wood-based panel	12	EN 13986	D-s2, d0 (2007/348/EC)
2.2	Gypsum fibre board	12.5	ETA-03/0050	A2-s1, d0
3	Vapour barrier Airstop vap	0.2	EN 13984	Test method acc to EN 13501-1 Tab. 1, if required (req'd)
4.1	Mineral fibre insulation 035 MW-EN 13162-T2-AF.5	160	EN 13162	A1 (96/603/EC, supplemented by 2000/605/EC)
4.2	Cellulose 038	160	ETA-06/0076	B-s2, d0
5	Timber studs C24	80/160	EN 338 EN 14081	D-s2, d0 (2003/593/EC)
	Top chord C24	80/160	as above	D-s2, d0 (2003/593/EC)
	Bottom chord C24	80/160	as above	D-s2, d0 (2003/593/EC)
6	Gypsum fibre board (ρ _{min} = 1000 kg/m ³)	12.5	ETA-03/0050	A2-s1, d0

External wall claddings:

7a	Adhesive mortar	2	ETA-10/0426	according to ETA-10/0426
7b	Polystyrene EPS EN 13163-T2-L2-W2-S2-P4-DS(70,-)2-DS(N)2	80	EN 13163	E
7c	Reinforced mortar	2-3	ETA-10/0426	according to ETA-10/0426
7d	Top coat	3	ETA-10/0426	according to ETA-10/0426

* The board also meets the requirements of DIN 18180.

** joints between the gypsum plasterboard ≤ 4mm

Fasteners

Components	Type	Spacing [mm]		Description
		Edge	Middle	
Wood-based panel to timber studs	Staples 155/45 CSG	≤ 75	≤ 150	P. 33
Gypsum plasterboard to wood-based panel	Screws TN35/212	≤ 250	≤ 250	P. 33